



# ELEMENT 29

RESOURCES

# Tier-1 Copper Discoveries in Peru

CORPORATE PRESENTATION

MARCH 2026

TSX-V: ECU OTCQB: EMTRF BVL: ECU

# Forward-Looking and Cautionary Statements

Certain statements in this presentation constitute “forward-looking information” within the meaning of applicable securities laws. Forward-looking information relates to future events, future performance and statements that are not historical facts. Forward-looking information can generally be identified by the use of forward-looking terminology such as “may”, “will”, “expect”, “intend”, “objective”, “estimate”, “anticipate”, “believe”, “potential”, “trend”, “indicate” or “continue” or the negative thereof or variations thereon or similar terminology. Forward-looking information in this presentation includes, but is not limited to, statements with respect to the merits of the Company’s mineral properties, the Company’s plans, goals and objectives, the Company’s work programs and potential studies, milestones of the Company, the delivery of a resource estimate, the timing and amount of future exploration and expenditures and the possible results of such exploration. Forward-looking information involves known and unknown risks, uncertainties and other factors which may cause the actual results, performance or achievements of the Company to be materially different from any future results, performance or achievements expressed or implied by the forward-looking information. Such risks include, among others, the risk that the Company will not be successful in completing its plans with respect to its mineral properties and its business; risks relating to the results of exploration activities; the ability of the Company to raise any necessary additional capital and obtain all necessary licenses and permits; future prices of, and demand for, copper and other metals; the Company’s ability to procure equipment and personnel, operating conditions, accidents, and other risks of the mining industry; risks related to the COVID-19 pandemic and the other risks described in the Prospectus. The Company believes that the expectations reflected in such forward-looking information are reasonable, but no assurance can be given that these expectations will prove to be correct and such forward-looking information should not be unduly relied upon. These statements speak only as of the date of this presentation. The Company does not intend, and does not assume any obligation, to update any forward-looking information except as required by law.

## Technical Information

The technical information contained in this document related to the mineral resource estimate of the Elida Copper Project was based upon the disclosure prepared by Marc Jutras, P.Eng., M.A.Sc., Principal, Mineral Resources, Ginto Consulting Inc., a Qualified Person as defined in National Instrument 43-101 Standards of Disclosure for Mineral Projects (“NI 43-101”), who is independent of Element 29 Resources Inc. Refer to the corresponding technical report entitled “NI 43-101 Technical Report, Mineral Resource Estimation of the Elida Porphyry Copper Project in Peru” with an effective date of September 20, 2022 and prepared in accordance with Form 43-101F1. The scientific and technical information contained in this document has been reviewed and approved by Richard Osmond (P.Ge.), President and CEO of Element 29 Resources Inc. and a Qualified Person as that term is defined in NI 43-101.

## Cautionary Note to U.S. Investors Concerning Estimates of Mineral Resources

The mineral resource estimates described in this presentation have been prepared in accordance with the requirements of Canadian securities regulatory authorities, which differ from the requirements of U.S. securities laws. The terms “Mineral Resource”, “Inferred Mineral Resource”, “Indicated Mineral Resource” and “Measured Mineral Resource” are defined in accordance with Canadian National Instrument 43-101, Standards of Disclosure for Mineral Projects (“NI 43-101”) and have meaning ascribed to those terms by the Canadian Institute of Mining, Metallurgy and Petroleum (“CIM”), as in the CIM Definition Standards on Mineral Resources and Mineral Reserves adopted by CIM Council, as amended. These definitions differ from the definitions in requirements under United States securities laws adopted by the United States Securities and Exchange Commission (“SEC”). Under Canadian rules, estimates of Inferred Mineral Resources may not form the basis of feasibility or pre-feasibility studies, except in rare cases. Investors are cautioned not to assume that all or any part of an Inferred Mineral Resource exists or is economically or legally mineable. An Inferred Mineral Resource is that part of a Mineral Resource for which quantity and grade or quality are estimated on the basis of limited geological evidence and sampling. Geological evidence is sufficient to imply but not verify geological and grade or quality continuity. An Inferred Mineral Resource has a lower level of confidence than that applying to an Indicated Mineral Resource and must not be converted to a mineral reserve. It is reasonably expected that the majority of Inferred Mineral Resources could be upgraded to Indicated Mineral Resources with continued exploration. United States investors are cautioned not to assume that all or any part of Mineral Resources determined in accordance with NI 43-101 and CIM standards will qualify as, or be identical to, mineral resources estimated under SEC standards applicable to U.S. companies. Accordingly, information contained in this presentation may not be comparable to similar information made public by U.S. companies subject to the reporting and disclosure requirements under the United States federal securities laws and the rules and regulations thereunder.

# Our Company: Tier-1 Copper Discoveries in a World-Class Mining Jurisdiction



**COPPER FOCUSED**  
Part of the Critical Minerals Value Chain for the Global Clean Energy Transition



**PROVEN MINING JURISDICTION**  
Peru is 3<sup>rd</sup> largest copper producer globally



**EXPERIENCED TEAM**  
Peru operating experience



**RESOURCE GROWTH**  
Building on established resources



**CATALYSTS**  
Tier-1 discovery and resource expansion potential

## Who We are

Element 29 Resources Inc. (E29) is advancing both its Elida copper deposit and Flor de Cobre project in Peru with a focus on growing its copper resources and expanding mineralization on multiple, untested targets. Our flagship Elida project has returned well-mineralized copper intercepts from recent drilling and are strategically located at lower elevations and near major infrastructure including roads, powerlines, ports, water, and skilled workforces.



# Peru: Proven Mining Jurisdiction

## PEDIGREE:

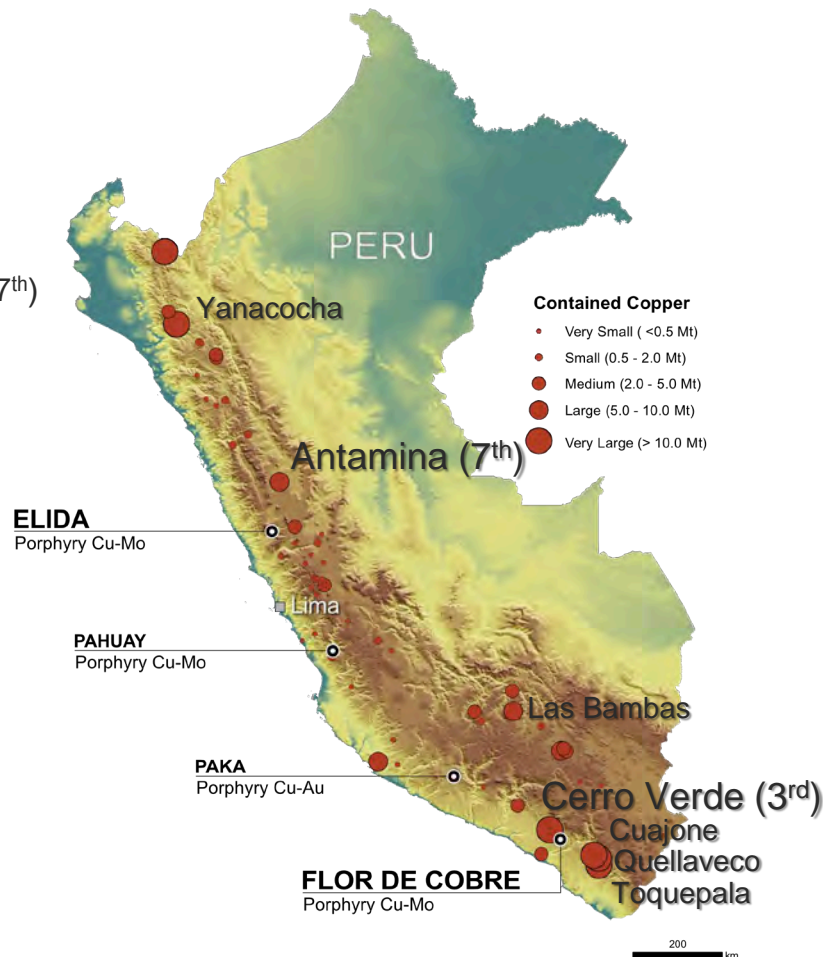
- Four (4) Cu projects for 27,000 ha of title concessions.
- World Class Mining Jurisdiction – 2024 – 3<sup>rd</sup> largest Cu producer (2.76 Mtpa).
- Two (2) world Top-10 Cu-mines by production (Cerro Verde – 3<sup>rd</sup> / Antamina – 7<sup>th</sup>)

## MINING FRIENDLY:

- Mining comprises over 60% of Peru's exports and approximately 10% of GDP.
- Low-cost copper producer – one of lowest in Americas.

## STABLE JURISDICTION:

- Free Trade Agreements with Canada and the United States.
  - No double taxation.
  - Capital flow.
  - Import/Export flow.
- Bilateral Investment Treaty with Canada and United States.
  - Capital investments protected.
  - Disputes tried outside of Peru through International Arbitration Court.



# Elida Project

## LOCATION ADVANTAGES



LOWER ELEVATION (~1,600 M)



TRANSPORTATION ROUTES



ELECTRICAL GRID



PORTS – 2 DEEP WATE PORTS



HYDROELECTRIC STATION



SKILLED WORKFORCE



# Elida Copper Project

22,800 HA TITLED CONCESSIONS



# Elida Copper Project

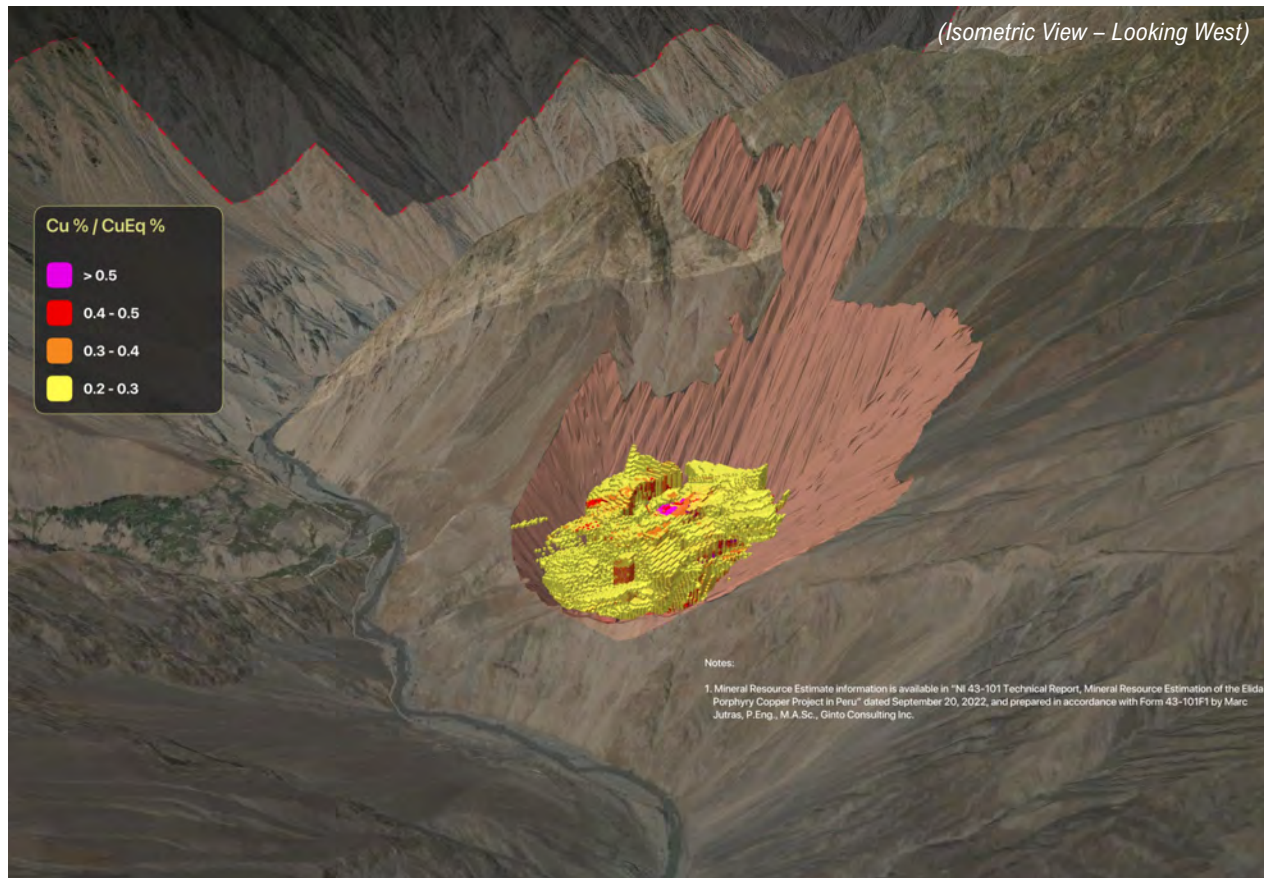
## INFERRED MINERAL RESOURCE ESTIMATE

### STRATEGIC ADVANTAGES

- Higher grade starter pit (>0.5% Cu)
- Low strip ratio (0.74:1).
- Low arsenic grades associated with mineralization.
- Access to water.
- Limited direct impact on local community.

Notes:

1. Mineral Resource Estimate information is available in "NI 43-101 Technical Report, Mineral Resource Estimation of the Elida Porphyry Copper Project in Peru" dated September 20, 2022, and prepared in accordance with Form 43-101F1 by Marc Jutras, P.Eng., M.A.Sc., Ginto Consulting Inc.



# Elida Copper Project

## INFERRED MINERAL RESOURCE ESTIMATE

(Isometric View – Looking SE)

Notes:

1. Mineral Resource Estimate information is available in "NI 43-101 Technical Report, Mineral Resource Estimation of the Elida Porphyry Copper Project in Peru" dated September 20, 2022, and prepared in accordance with Form 43-101F1 by Marc Jutras, P.Eng., M.A.Sc., Ginto Consulting Inc.

2. The CuEq grades are calculated using  $CuEq = Cu\% \times 0.85 + [Mo\% \times 4.2578] + [Ag \text{ g/t} \times 0.0074]$  utilizing metal recoveries of Cu = 85%, Mo = 65%, and Ag = 65% and metal prices of Cu = US\$4.56/lb, Mo = US\$29.87/lb and Ag = US\$35.50/oz based on a 2-year average of daily spot prices (from January 16, 2024, to January 15, 2026). The spot price of Mo is derived from Molybdenum Bar, 99.9% minimum purity, China converted to US\$/lbs.

ELID033

ELID037

### HIGHLIGHTS

#### Pit Constrained Inferred Mineral Resource Estimate (14,361.4 m drilling):

- **321.7 million tonnes (0.2% Cu cut off)**
  - 0.32% Cu, 0.03% Mo, 2.61 g/t Ag delineated (Zone 1)
  - 0.74:1 strip ratio
- **143 million tonnes (0.3% Cu cut off)**
  - 0.41% Cu, 0.03% Mo, 3.31 g/t Ag
- **59.9 million tonnes (0.4% Cu cut off)**
  - 0.49% Cu, 0.04% Mo, 3.99 g/t Ag

### Cu % / CuEq %

- > 0.5
- 0.4 - 0.5
- 0.3 - 0.4
- 0.2 - 0.3

Table 14-12: Mineral resource constraining parameters\*, Elida Deposit. Source: Ginto (2022).

Copper Price	Mining Cost	Processing Cost	G&A Cost	Copper Recovery	Pit Slopes
\$3.46/lb	\$2.00/t	\$5.00/t	\$1.40/t	87%	45°

\*All dollar amounts in US\$

# Elida Copper Project

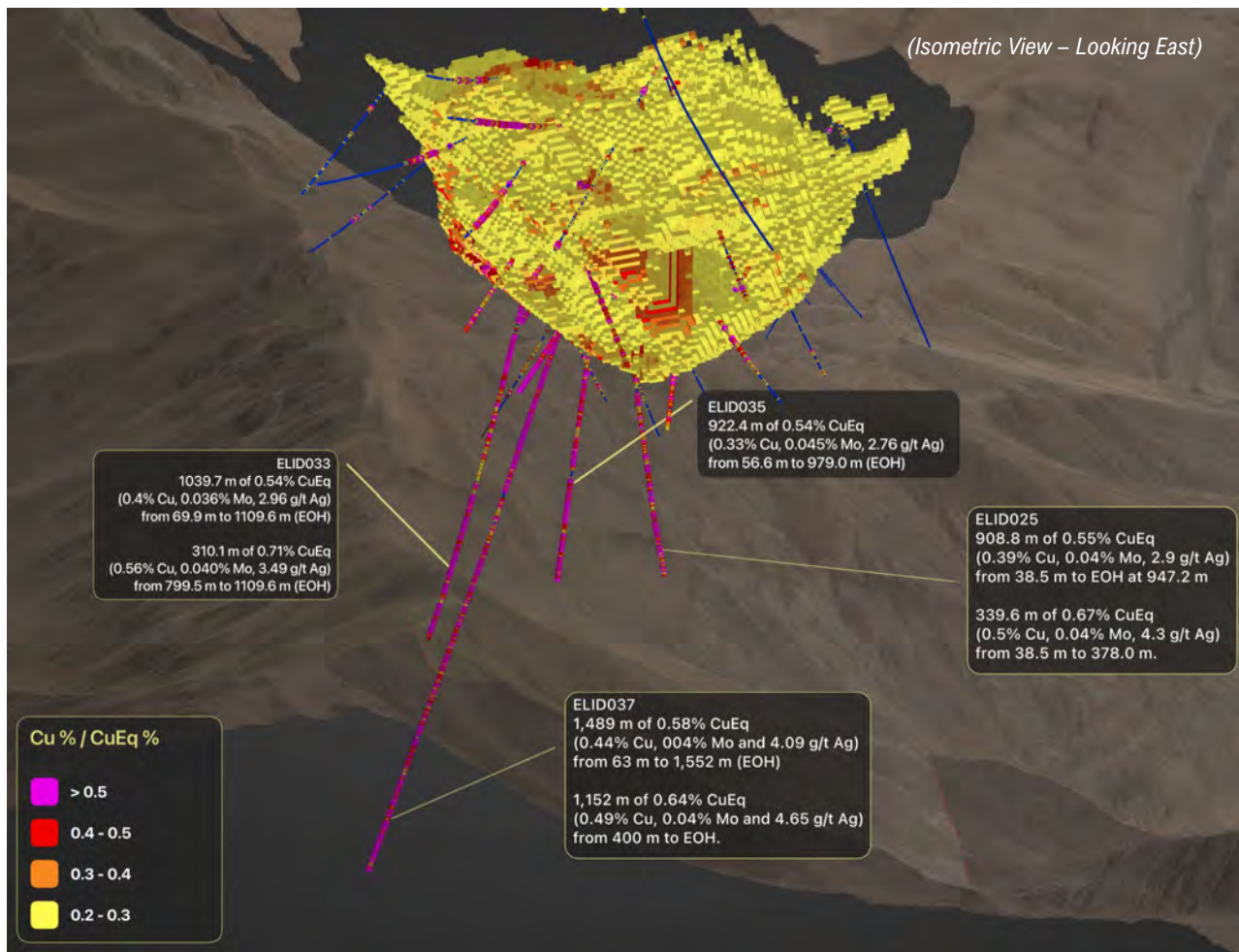
## 2025 DRILL PROGRAM

### Objectives:

- Infill drill gaps in the pit-constrained mineral resource to potentially increase the overall Cu-Mo-Ag grades.
- Continue drilling outside pit-shell to depths of 1000+ m while still in higher-grade porphyry Cu-Mo-Ag mineralization.
- Use MT 3D inversion model to target Cu-mineralization below and outside of the pit-shell.

### Notes:

1. Mineral Resource Estimate information is available in “NI 43-101 Technical Report, Mineral Resource Estimation of the Elida Porphyry Copper Project in Peru” dated September 20, 2022, and prepared in accordance with Form 43-101F1 by Marc Jutras, P.Eng., M.A.Sc., Ginto Consulting Inc.
2. The CuEq grades are calculated using  $CuEq = Cu\% \times 0.85 + [Mo\% \times 4.2578] + [Ag\ g/t \times 0.0074]$  utilizing metal recoveries of Cu = 85%, Mo = 65%, and Ag = 65% and metal prices of Cu = US\$4.56/lb, Mo = US\$29.87/lb and Ag = US\$35.50/oz based on a 2-year average of daily spot prices (from January 16, 2024, to January 15, 2026). The spot price of Mo is derived from Molybdenum Bar, 99.9% minimum purity, China converted to US\$/lbs.
3. Refer to news release “ELEMENT 29 ANNOUNCES RESULTS FROM ELIDA PHASE-III DRILL PROGRAM INCLUDING 1039.6 METRES OF 0.54% CUEQ” dated January 22nd, 2025 for results from ELID033 and ELID035.
4. Refer to news release “ELEMENT 29 REPORTS FINAL THREE HOLES FROM THE ELIDA PHASE 1 DRILLING AND REPORTS 908.75 METRES OF 0.55 % CUEQ” dated January 19th, 2022 for results from ELID025.



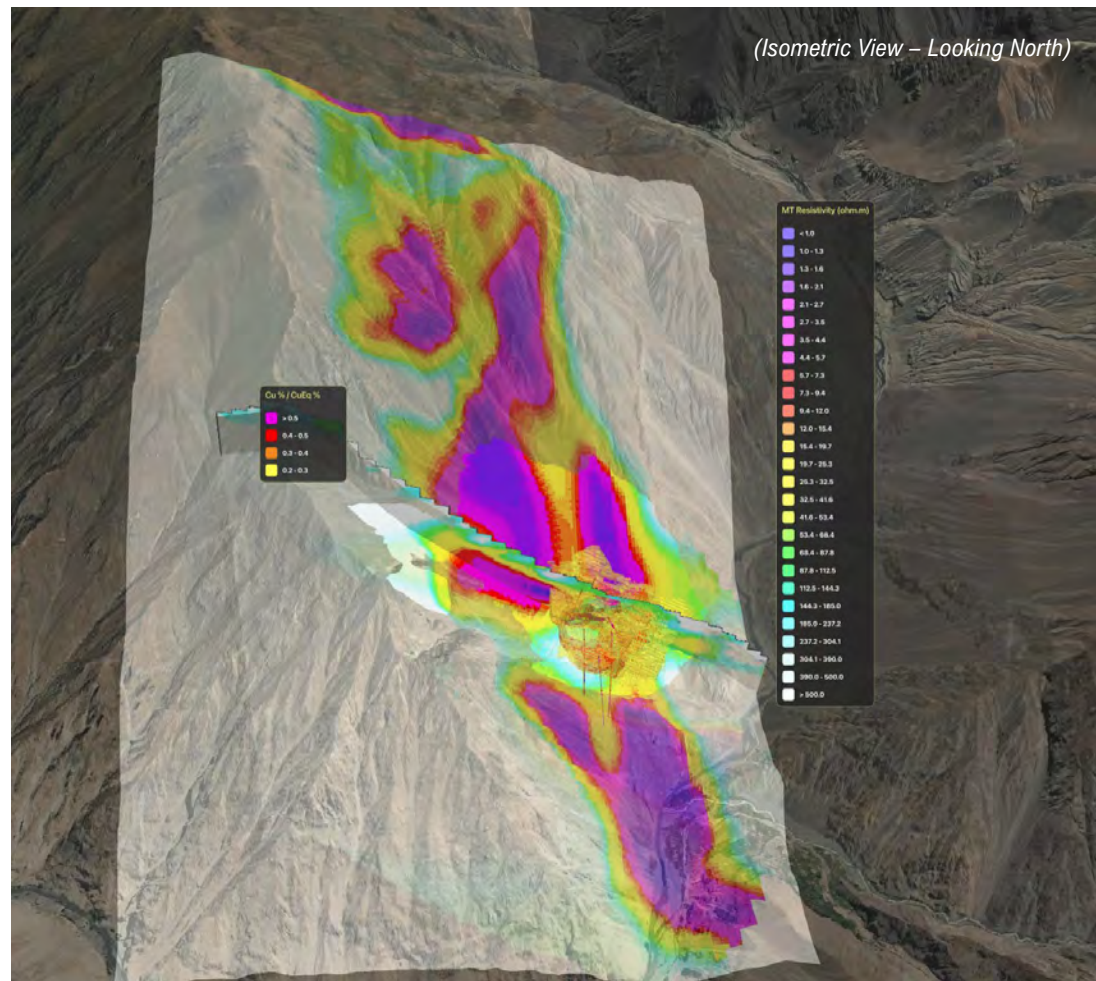
# Elida Copper Project

## MT GEOPHYSICAL SURVEY

- MT 3D inversion model depth slice at -400 m below surface.
- Outlines a >6,000 m low-resistivity trend associated with hydrothermally altered volcanoclastic and volcano-sedimentary rocks.
- Low-resistivity anomalies interpreted to map the hydrothermal footprint of the Elida porphyry system.
- System appears open to the north.
- Vertical section shown through drill hole ELID037.

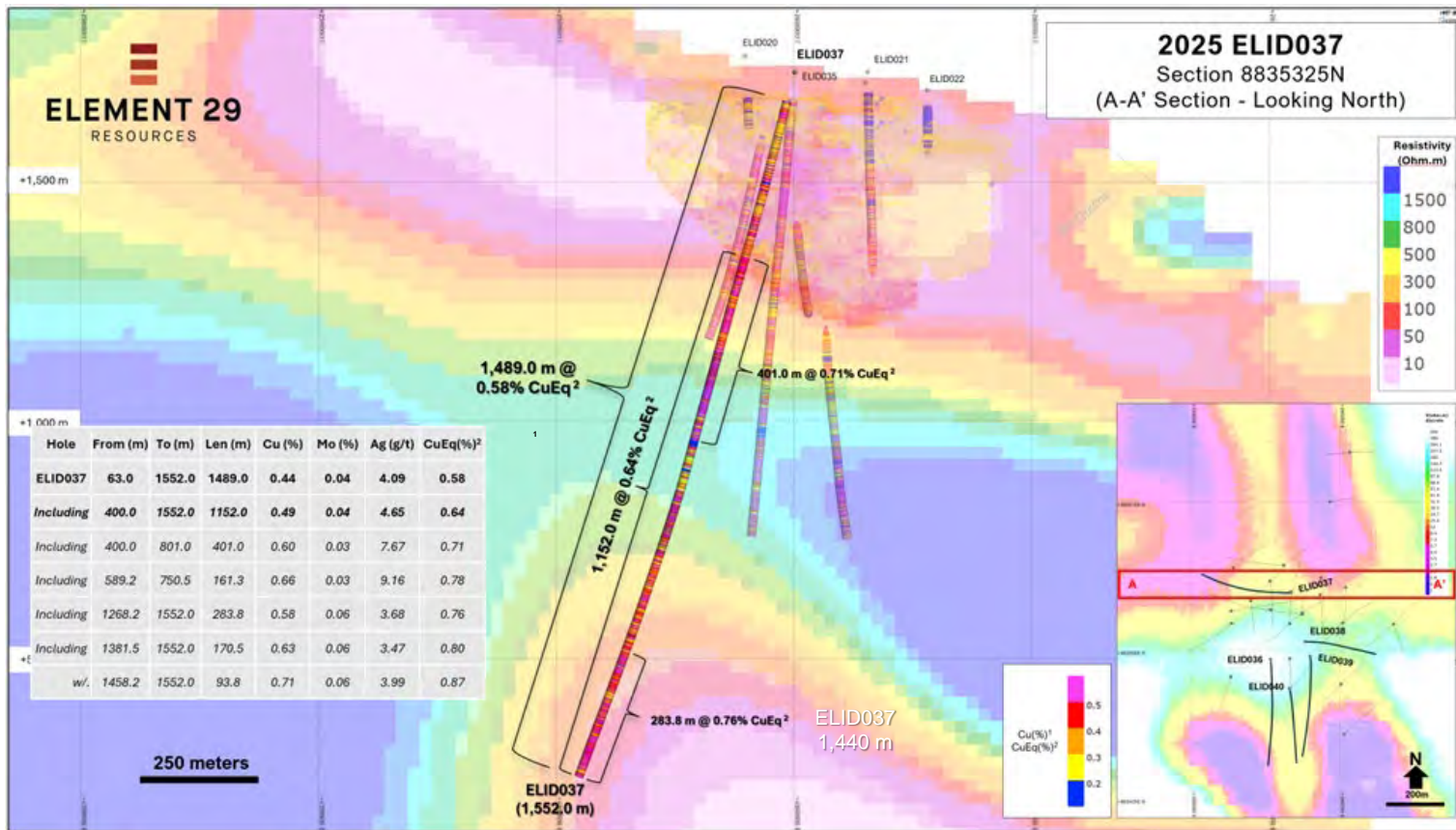
### Notes:

1. Mineral Resource Estimate information is available in "NI 43-101 Technical Report, Mineral Resource Estimation of the Elida Porphyry Copper Project in Peru" dated September 20, 2022, and prepared in accordance with Form 43-101F1 by Marc Jutras, P.Eng., M.A.Sc., Ginto Consulting Inc.



# Elida Copper Project

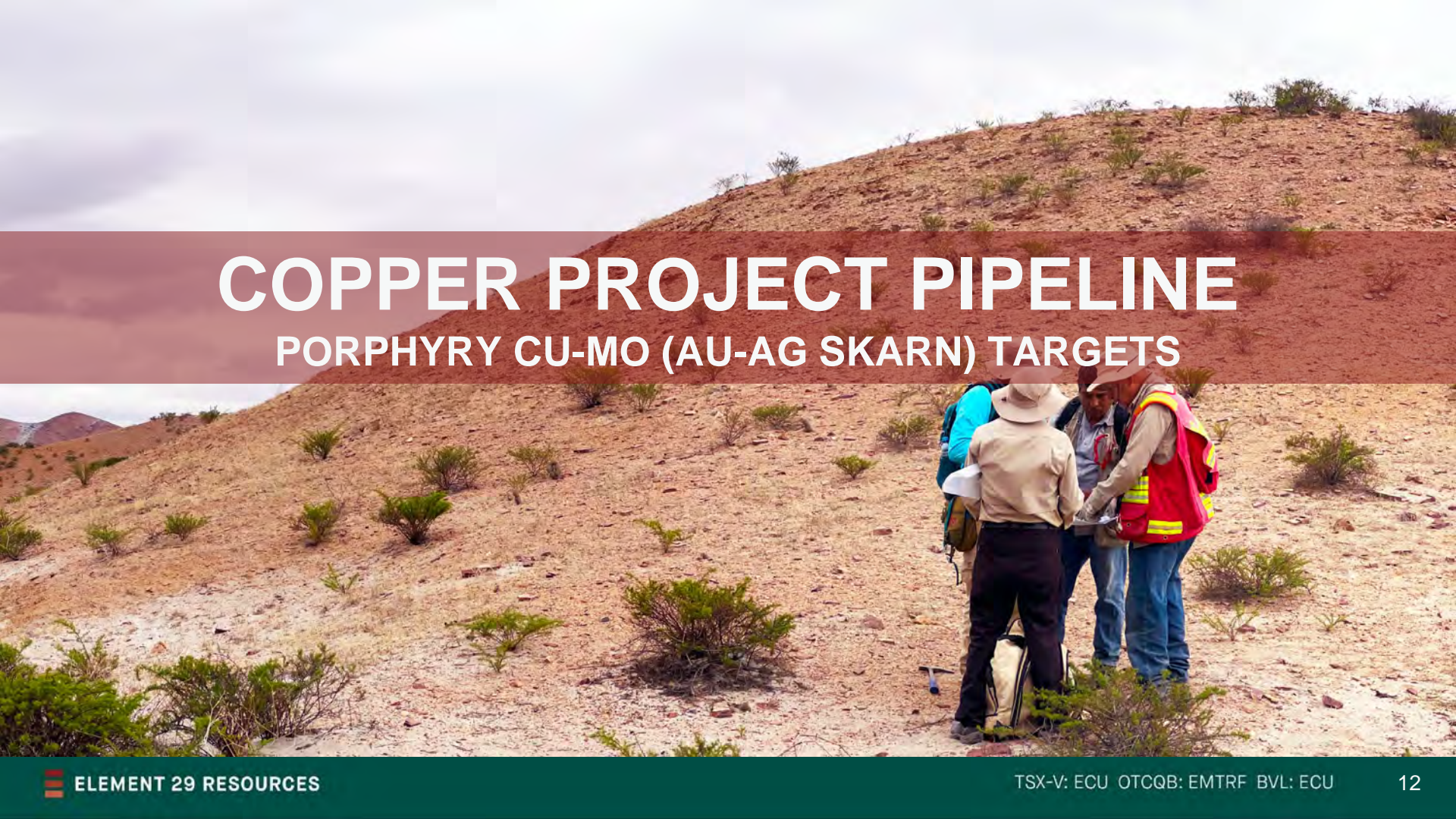
## ELID037 MT SECTION



### Notes:

1. Mineral Resource Estimate information is available in "NI 43-101 Technical Report, Mineral Resource Estimation of the Elida Porphyry Copper Project in Peru" dated September 20, 2022, and prepared in accordance with Form 43-101F1 by Marc Jutras, P.Eng., M.A.Sc., Ginto Consulting Inc.

2. The CuEq grades are calculated using  $CuEq = Cu\% \times 0.85 + [Mo\% \times 4.2578] + [Ag\ g/t \times 0.0074]$  utilizing metal recoveries of Cu = 85%, Mo = 65%, and Ag = 65% and metal prices of Cu = US\$4.56/lb, Mo = US\$29.87/lb and Ag = US\$35.50/oz based on a 2-year average of daily spot prices (from January 16, 2024, to January 15, 2026). The spot price of Mo is derived from Molybdenum Bar, 99.9% minimum purity, China converted to US\$/lbs.



# COPPER PROJECT PIPELINE

## PORPHYRY CU-MO (AU-AG SKARN) TARGETS

# Copper Project Pipeline

EXTENSION OF THE TERTIARY ARC - NORTH



LOWER ELEVATION (~3000 M)



TRANSPORTATION ROUTES



ELECTRICAL GRID



PORTS



MINING SERVICES



SKILLED WORKFORCE

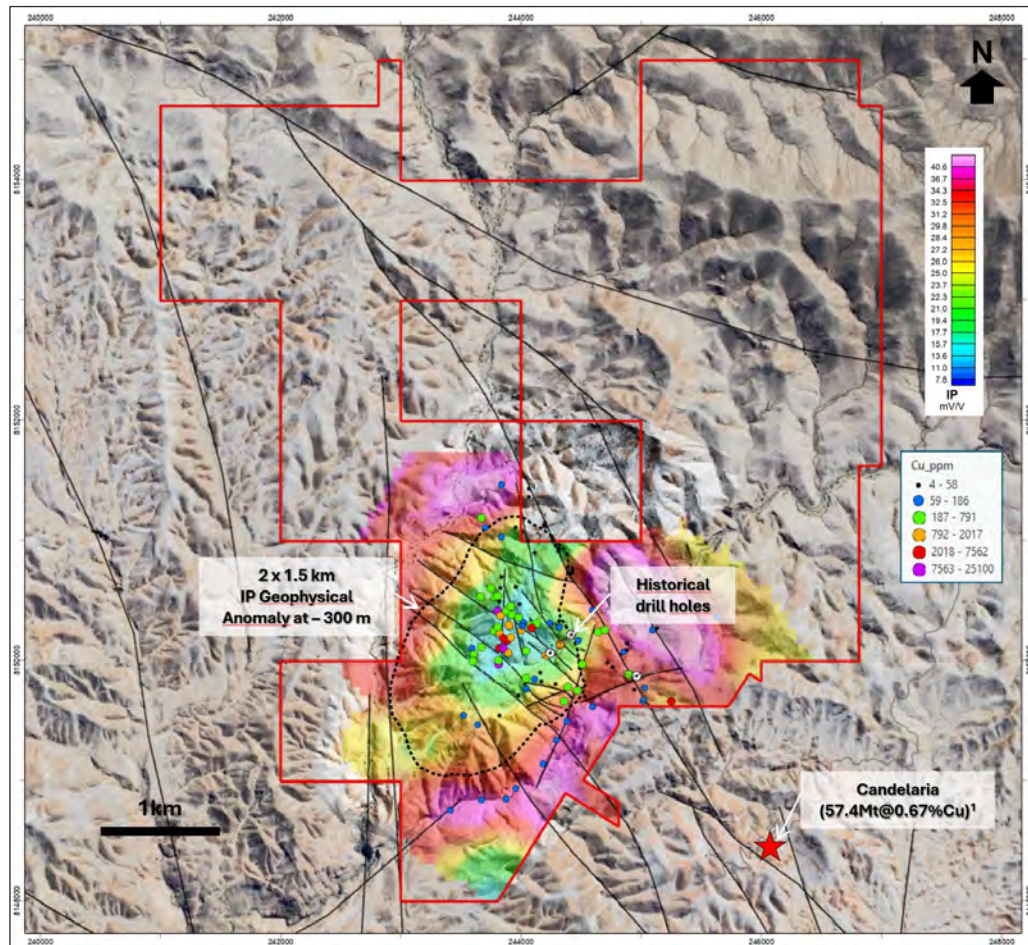


# Flor de Cobre Project

EXPLORATION PROSPECT

## ATRAVESADO PORPHYRY CU-MO PROSPECT

- Geophysical response coincides with anomalous Cu geochemistry, potassic alteration, and A-type quartz veining.
- Historical drilling by Anglo American drilled near the edge of the main target area.
- Target is just 1.5 km to the northwest of the Candelaria deposit with historical resources of 57.4 million tonnes of 0.67% Cu<sup>1</sup>.
- DIA environmental permit received and exempted from the Prior Consultation Process.

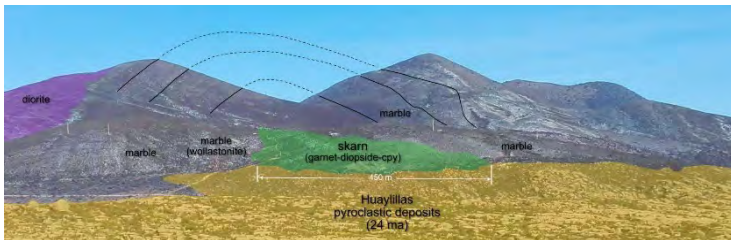


Notes:  
1. The source of the historical resource estimate is a press release issued by Rio Amarillo Mining Ltd. dated November 15, 1996 (Rio Amarillo Mining Ltd., November 15th, 1996: Aija Property Drill Results).

# Paka

## PORPHYRY CU-(AU-AG-ZN) SKARN

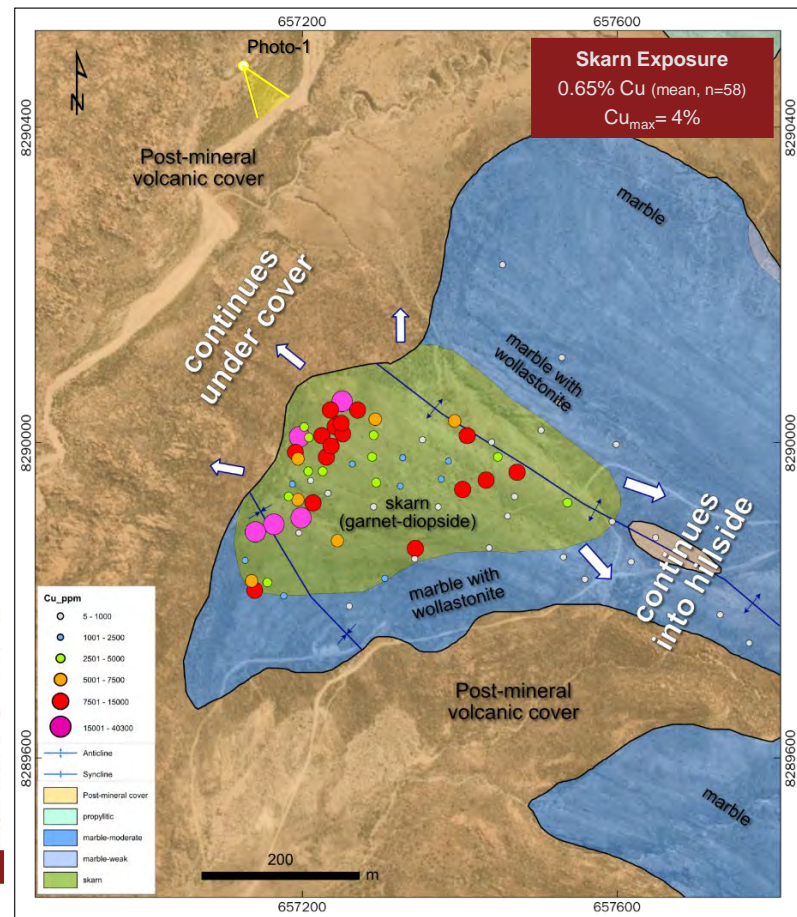
- Skarn outcrops (450 x 250m) that continues to the northwest under post-mineral volcanic cover.
- 4.3 x 1.3 km porphyry skarn related hydrothermal alteration footprint.
- Paleocene age mineralization based on field relationships.
- 2,600 ha concession located in the northwest extension of the Southern Peru Copper Belt.
- Drill permitting in progress.



**Photo-1:** Panoramic view looking SE showing the porphyry Cu-(Au-Ag-Zn) skarn alteration related to a deeper Tertiary porphyry complex intruded along the anticlinal axis of middle Cretaceous-aged Acurquina Formation limestones. The porphyry Cu skarn alteration is unconformably overlain to the NW by post-mineral Miocene-aged Huayllillas volcanoclastic sequence.



Cu=1.08%, Au=0.56 g/t, Ag=12.3 g/t, Zn=0.20%



# Pahuay

## PORPHYRY CU-(MO-AG) SKARN

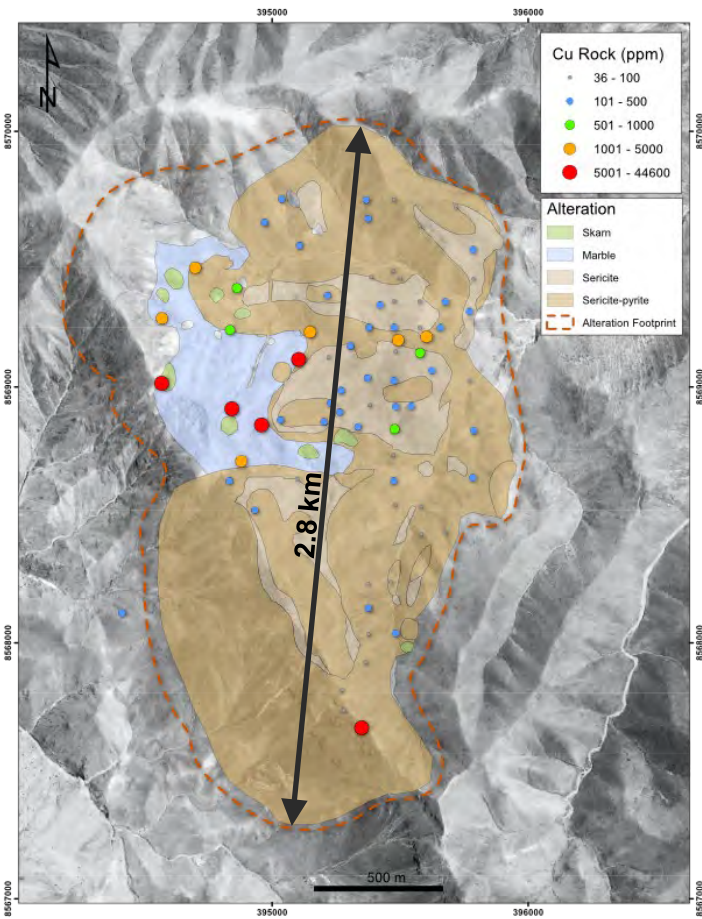
- Upper potassic zone exposed leaving potential for fully preserved porphyry skarn system at depth.
- 2.8 x 1.7 km porphyry-related hydrothermal alteration footprint, not drill tested.
- Upper Cretaceous host rocks constrains mineralization age to Paleocene or younger.
- 1,000 ha concession located in the northwest extension of the Southern Peru Copper Belt.
- Access permit approval in 2024 to conduct technical work and baseline environmental studies in 2025.



A vein stockwork



Brown and green garnet skarn



# Board and Management

<p><b>Richard Osmond</b> Director, CEO (P.Geo., ICD.D)</p>	<ul style="list-style-type: none"> <li>• Geoscientist and junior mining executive with over 25 years experience.</li> <li>• Involved in discoveries at Vale's Voisey's Bay Ni-Cu-Co mine and Glencore's Raglan Ni-Cu-PGM mine.</li> <li>• Senior technical lead with Anglo American responsible for North America and Europe focused on Ni exploration in northern Canada, Alaska and Scandinavia as well as IOCG and porphyry Cu-Mo exploration in Mexico and Alaska.</li> </ul>
<p><b>Brad Mercer</b> Director, Chair (P.Geo.)</p>	<ul style="list-style-type: none"> <li>• Geoscientist and mining executive who retired in 2022 as Chief Operating Officer for Capstone Copper Corp. after 17 years of service and helping to build Capstone from a \$20 million into a \$5 billion company.</li> </ul>
<p><b>Patrick Elliott</b> Director, Audit Committee Chair</p>	<ul style="list-style-type: none"> <li>• Geoscientist and junior mining executive with 17 years experience including discoveries at Teck's Zafranal porphyry copper deposit and Midas Gold's Golden Meadows deposit.</li> <li>• President &amp; CEO of Forte Minerals Corp.</li> </ul>
<p><b>Chet Idzisek</b> Director and Compensation Committee Chair.</p>	<ul style="list-style-type: none"> <li>• Geoscientist and junior mining executive with over 40 years of experience.</li> <li>• Awarded Prospector of the Year from the PDAC in 1994 for his roles in the discovery of the Eskay Creek VMS deposit in northern British Columbia and the Cobre Panama porphyry copper deposit in the Republic of Panama.</li> </ul>
<p><b>Mary-Carmen Vera</b> Director, Corp. Gov. and Nomination Committee Chair</p>	<ul style="list-style-type: none"> <li>• Peruvian geological engineer.</li> <li>• Member of the Board of Directors for the PDAC with extensive experience in the development and management of ESG and Sustainability Best Practices for the mining and mineral exploration sectors.</li> </ul>
<p><b>Manuel Montoya</b> CTO – Country Manager</p>	<ul style="list-style-type: none"> <li>• Peruvian geoscientist with over 30 years experience including as Principal Geologist for the Andes Exploration Group at Teck.</li> <li>• Integral part of the Teck exploration team responsible for the discovery of the Zafranal porphyry copper-gold deposit in southern Peru.</li> </ul>
<p><b>Michael Au</b> CFO (CFA, CPA, CA)</p>	<ul style="list-style-type: none"> <li>• Financial mining executive with over 20 years experience in financial and regulatory reporting, internal controls and accounting standards.</li> <li>• Worked as comptroller for Element 29 since before the IPO and has worked with KPMG and on international projects including Moscow, Singapore and Bermuda.</li> </ul>

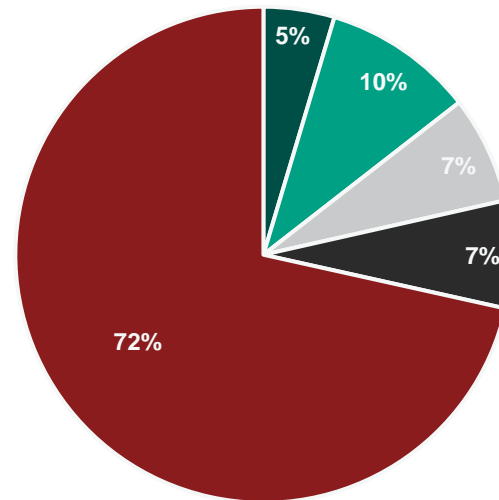
# Capital Structure

Capital Structure – September 24 <sup>th</sup> , 2025	
Shares Issued	155.5 million
Fully Diluted	185.4 million
Options & RSU/DSU	10.5 million
Total Warrants	19.4 million
<ul style="list-style-type: none"><li>• 13.1 million warrants (August 2027, \$0.50)</li><li>• 6.3 million warrants (August 2028, \$0.70)</li></ul>	

TSX-V: **ECU** | OTCQB: **EMTRF** | BVL: **ECU**



## Supportive strategic partners Insiders aligned with shareholders



■ Board & Mgmt ■ Globetrotters ■ Acasta Partners ■ Resource Capital Funds ■ Retail

# Sustainability

- Sustainability encompasses best practices in ethical conduct, health-safety-security, environmental management, community engagement, and human rights.
- Best Practices for responsible exploration including a commitment to:
  - Ethical conduct and the promotion of honesty, integrity, transparency, and accountability.
  - Creating an injury free workplace so that all our employees, contractors and visitors get home safely.
  - Environmental stewardship by minimizing our footprint and disturbances to the land, air and water.
  - Support social and economic development of the host communities.
  - Respect the culture, values and human rights of all peoples.
  - Ensuring compliance with all applicable legal and regulatory requirements.



Monitoring baseline water quality and minimizing our environmental footprint by recycling waste and protecting our air by reducing our carbon footprint through the use of solar panels where feasible.



Minimizing our environmental footprint and protecting+preserving land+water by using membranes to protect against drill-site spills and to recover-recycle used water as well as protecting indigenous plant species.



Worksite health and safety training provided to a staff of up to 64 people employed from the local communities during the Elida and Flor de Cobre drilling programs.

# Catalyst-Driven 2026 Work Plans<sup>1</sup>

EXPANDING COPPER RESOURCES

(Isometric View – Looking West)

Catalysts		2026			
		Q1	Q2	Q3	Q4
ELIDA	7000 m Drilling Program	Completed	Planned		
	Metallurgical Test Work		Planned		
	Updated Drill Permit - DIA (5-Year)	Completed			
	Mineral Resource Update				Planned
	ANT Geophysical Survey		Planned		
FLOR de COBRE	Community Access Agreement		Planned		
	Geological Field Program		Planned		
	DIA Drill Permit		Planned		
	Drilling - Atravesado (2000 m)			Planned	
PAKA	Deep IP Geophysics			Planned	
	DIA Environmental Certificate (5-Year)	Completed	Planned		
PAHUAY	Access Agreement/Geological		Planned		
	DIA Environmental Certificate (5-Year)			Planned	
		Completed	Planned		

Note:

1. Subject to financing.



# ELEMENT 29

RESOURCES

## Contact

---


RICHARD OSMOND


President & CEO

1-604-805-0314

rosmond@e29copper.com

[www.e29copper.com](http://www.e29copper.com)

– Follow us Twitter 

– Connect with us on LinkedIn 

– Watch us on YouTube 